



ICFRE - TFRI NEWSLETTER

October-December, 2024 VOL:16



From the Director's Desk.

I am pleased to mention that ICFRE-TFRI, Jabalpur, one of the nine regional institutes under the ICFRE provide strong research support for sustainable development of forests and forestry sectors in central India.

I take pride in sharing the 16th Volume (October-December, 2025) of ICFRE-TFRI Newsletter, showcasing significant research activities, events organized, participated and publications made during the period.

I hope this newsletter will be helpful for researchers, different stakeholders, and policy makers concerned with forestry research.

Dr. H. S. Ginwal
Director, ICFRE-TFRI Jabalpur

Major Events

Shri Gabriel D. Wangsu, Hon. Minister, Agri., Horti., AHV & DD, Fishery Food & Civil Supply, Legal Metrology & Consumer Affairs Arunachal Pradesh, Ms. Koj Rinya, IFS, Secretary, Horticulture and Shri Hage Tari, IOFS, Secretary AHVDD visited ICFRE - Tropical Forest Research Institute, Jabalpur. and farmers field to explore the possibilities of establishment of agroforestry models based on Piper betle in Arunachal Pradesh to enhance livelihood of tribal population.



Participation in Eighth Session of the Intergovernmental Technical Working Group on Forest Genetic Resources

Dr. H. S. Ginwal, Director, ICFRE -Tropical Forest Research Institute, Jabalpur attended Eighth Session of the Intergovernmental Technical Working Group on Forest Genetic Resources at FAO Rome held on 26th to 28th November 2024, as part of delegation of MoEF&CC, Govt. of India. The event was organized by the Commission on Genetic Resources for Food and Agriculture.



Contents

Content	Page
Major Events	1
Scientist's Corner	2
Outreach Programmes	9
Prakrati Program	8
Celebration of Important Days	10
Staff News	12
Awards	12
Publications	12
Institute achievements and of society contribution towards betterment	13
Knowledge Bequest of ICFRE-TFRI	14
Testing Facilities Offered	16
Services for to make your society green and healthy	17



October-December, 2024 VOL:16

SCIENTIST'S CORNER

Bamboo grass based restoration

Established a bamboo-grass-based restoration plot in area Lantana invaded.

The Lantana was removed from the invaded area through mechanical/manual methods, followed by the planting of various bamboo and grass species.

Bamboo species planted include *Dendrocalamus strictus*, *D. longispathus*, *Bambusa tulda*, *B. bambos*, *B. vulgaris*, *B. nutans*, and *B. balcooa*. Grass species planted include *Pennisetum pedicellatum*, *Cenchrus setigerus*, *Chrysopogon fulvus*, and *Heteropogon contortus*.



Shri Neeraj Prajapati
Scientist-C
SFM&AF DIVISION

How to reduce tree mortality due to cementing surfaces in the urban areas?

In urban areas, consumption of cement is very high in various developmental activities. In the present scenario, accommodating trees in urban areas is essential to make cities green and ideal for living for mankind. The construction of concrete surfaces around the trees is very common in all cities, but due to poor aeration, a very low infiltration of water in the soil, and the heating of surfaces in the summer, it causes the death of trees in the urban area. To reduce the mortality of trees requires adopting the concrete-free space equal to the tree crown of a mature tree. This practice may solve the problem of tree mortality in urban areas due to cementing surfaces around trees.



Concrete-free space equal to the tree crown at Uppsala, Sweden

Rathod Digvijaysinh Umedsinh
Scientist – C
SFM&AF DIVISION



October-December, 2024 VOL:16

Bio prospecting of NTFPs

Herbal cream was developed with combination of extracts and oils of *Cassia tora* and *Sapindus laurifolius* and assessed for physico-chemical properties, viz. phase separation, irritability, spreadability, etc. The developed herbal cream was further assessed for wound healing and anti-inflammatory activities. Herbal soaps were developed from *Madhuca longifolia* seed oil, leaves and bark extract and leaves and bark powder. Herbal Mosquito larvicide was developed with combination of extracts and oils of *Hyptis suaveolens* and *Lantana camara* and assessed in field condition. Developed herbal mosquito larvicide was found effective in larval mortality in both conditions. Herbal noodles and capsules were developed for assessing anti-diabetic activity.



Herbal Wound Healing and Anti-Inflammatory Cream



Herbal soaps



Herbal Mosquito Larvicide



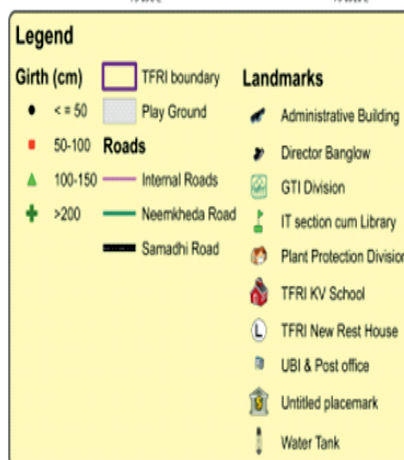
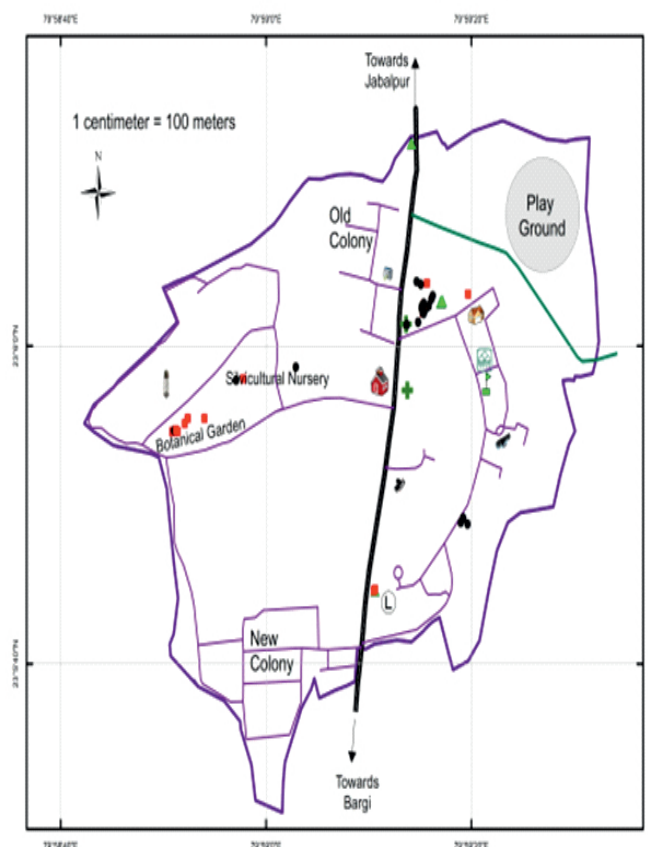
Herbal capsules

Dr. Vishakha Kumbhare
Scientist-F

Geo-tagging of valuable trees diversity of TFRI campus

Acacia catechu (खैर)

Distribution Map in ICFRE-TFRI Jabalpur Campus



Map composed by
Dheeraj Gupta
ICFRE-TFRI
Jabalpur
Date: 06-01-2025

Shri Dheeraj Gupta
Scientist-D
FE&CC DIVISION



October-December, 2024 VOL:16

Team of Scientist and Technical staff conducted trees values (>10 cm DBH) enumeration work at ICFRE-TFRI, Jabalpur. Total 110 Species were reported in the campus.

Tree Diversity in TFRI Campus-

ICFRE- Tropical Forest Research Institute, Jabalpur
List of valuable tree and it's numbers existed in campus

Name of Species	No. of plants	Name of Species	No. of plants
<i>Acacia auriculiformis</i>	1	<i>Derris indica</i>	20
<i>Acacia catechu</i>	48	<i>Diosyros melanoxyton</i>	17
<i>Acacia mangium</i>	1	<i>Dolichandrone falcata</i>	1
<i>Acacia nilotica</i>	12	<i>Elaeocarpus ganitrus</i>	1
<i>Adansonia digitata</i>	2	<i>Erythrina suberosa</i>	4
<i>Adina cordifolia</i>	5	<i>Eucalyptus camaldulensis</i>	7
<i>Aegle marmelos</i>	16	<i>Eucalyptus globulus</i>	143
<i>Ailanthus excels</i>	35	<i>Eucalyptus spp.</i>	1
<i>Albizia amara</i>	1	<i>Eucalyptus tereticornis</i>	12
<i>Albizia chinensis</i>	2	<i>Ficus benghalensis</i>	8
<i>Albizia lebbek</i>	57	<i>Ficus carica</i>	1
<i>Albizia procera</i>	114	<i>Ficus krishnae</i>	1
<i>Annona reticulate</i>	2	<i>Ficus nervosa</i>	1
<i>Anogeissus latifolia</i>	4	<i>Ficus racemosa</i>	5
<i>Anogeissus pendula</i>	15	<i>Ficus religiosa</i>	6
<i>Anthocephalus indicus</i>	4	<i>Ficus virens</i>	1
<i>Aphanamixis polystachya</i>	1	<i>Flacourtia indica</i>	2
<i>Artocarpus heterophyllus</i>	5	<i>Gmelina arborea</i>	15
<i>Artocarpus lakoocha</i>	2	<i>Grewia tiliifolia</i>	2
<i>Azadirachta indica</i>	203	<i>Haldina cordifolia</i>	4
<i>Bombax ceiba</i>	58	<i>Holoptelea integrifolia</i>	99
<i>Boswellia serrata</i>	1	<i>Hymenodictyon orixense</i>	1
<i>Bridelia retusa</i>	87	<i>Hymenodictyon excelsum</i>	3
<i>Buchanania lanzan</i>	44	<i>Jacaranda mimosifolia</i>	1
<i>Butea monosperma</i>	359	<i>Kigelia pinnata</i>	5
<i>Callistemon acuminatus</i>	3	<i>Lagerstroemia parviflora</i>	19
<i>Callistemon lanceolatus</i>	4	<i>Lagerstroemia speciosa</i>	1
<i>Cassia fistula</i>	48	<i>Lannea coromandelica</i>	2
<i>Cassia siamea</i>	28	<i>Litsea glutinosa</i>	29
<i>Cassine glauca</i>	1	<i>Madhuca indica</i>	1
<i>Casuarina equisetifolia</i>	1	<i>Madhuca longifolia</i>	23
<i>Ceiba pentandra</i>	4	<i>Mangnifera indica</i>	39
<i>Chloroxylon swietenia</i>	1	<i>Melia azedarach</i>	11
<i>Cleistanthus collinus</i>	1	<i>Millettia pinnata</i>	7
<i>Cocos nucifera</i>	2	<i>Mimusops elengi</i>	45
<i>Cordia myxa</i>	1	<i>Moringa oleifera</i>	1
<i>Dalbergia latifolia</i>	131	<i>Morus alba</i>	1
<i>Dalbergia obtusifolia</i>	2	<i>Millettia pinnata</i>	2
<i>Dalbergia ovata</i>	1	<i>Mimusops elengi</i>	1
<i>Dalbergia sissoo</i>	12	<i>Mitragyna parvifolia</i>	1
<i>Delonix regia</i>	66	<i>Moringa oleifera</i>	3



October-December, 2024 VOL:16

Name of Species	No. of plants
<i>Morus alba</i>	39
<i>Mitragyna parvifolia</i>	2
<i>Nyctanthes arbor-tristis</i>	3
<i>Peltophorum pterocarpum</i>	31
<i>Phyllanthus emblica</i>	78
<i>Pterocarpus marsupium</i>	11
<i>Pterospermum acerifolium</i>	4
<i>Putranjiva roxburghii</i>	3
<i>Radermachera xylocarpa</i>	4
<i>Saccopetalum tomentosum</i>	1
<i>Salvadora persica</i>	218
<i>Santalum album</i>	1
<i>Sapindus mukorossi</i>	24
<i>Saraca asoca</i>	3
<i>Schleichera oleosa</i>	40
<i>Senegalia catechu</i>	8
<i>Senna siamea</i>	1
<i>Sterculia foetida</i>	21
<i>Sterculia urens</i>	8
<i>Syzygium cumini</i>	21
<i>Tamarindus indica</i>	437
<i>Tectona grandis</i>	35
<i>Terminalia arjuna</i>	3
<i>Terminalia bellirica</i>	2
<i>Terminalia catappa</i>	7
<i>Terminalia elliptica</i>	2
<i>Terminalia indica</i>	2
<i>Terminalia tomentosa</i>	7
<i>Vachellia nilotica</i>	

Training and Capacity Building

ICFRE - Tropical Forest Research Institute, Jabalpur conducted hands-on training on biological control of key defoliator pests of teak at Karopani and surrounding forest areas in Madhya Pradesh on 16th October 2024 for 45 frontline staff of MPRVVN, Kundam Project.

Smt. Seema Dvivedi IFS, Divisional Manager, Kundam Project Division, MPFDC Ltd., emphasised on use of biological control methods demonstrated by Dr. Nidheesh T. D., Scientist and Mr. Nahar Singh Mawai of the institute.



Implementation of E-Office

A three-day training (19th Nov. to 21st Nov. 2024) was conducted for scientists and technical staff of ICFRE-TFRI to ensure the efficient and timely implementation of E-Office.

In the inaugural speech, the Director emphasized the importance of E-Office and highlighted the major initiative of Ministry of Environment, Forest and Climate Change, GOI to implement a paperless work environment in the offices across all institute of the Indian Council of Forestry Research and Education (ICFRE). The training was organized by the IT Cell under the guidance of Dr. Fatima Shirin, the E-Office Team Coordinator.

Shri V. Soundararajan, In-Charge (IT) and Nodal Officer for E-Office, delivered a lecture covering topics such as e-receipt generation, creating electronic/physical files, preparing yellow/green notes, and file processing. Dr. Rajesh Kumar Mishra and Shri V. Soundararajan conducted interactive practical sessions, providing detailed hands-on training on various e-Office modules, including the use of government/NIC emails and essential e-Office operations.





October-December, 2024 VOL:16



The Internal Complaint Committee for Prevention of Sexual Harassment Against Women, ICFRE - Tropical Forest Research Institute, Jabalpur organised a guest lecture of Mrs. Geeta Sharad Tiwari, Social activist and Founder of "Prayas Parivar Paramarsh Kendra", Jabalpur for the women employees of the institute on 20th November, 2024 to spread awareness about "Women's safety at workplace".



October-December, 2024 VOL:16

One week training on “High Quality Plant Production and Livelihood Security through Agroforestry” was conducted for 20 forest officials of Gujarat Forest Department at ICFRE - Tropical Forest Research Institute, Jabalpur during 2nd - 6th December 2024. Dr. H.S. Ginwal, Director addressed forest officials and highlighted achievements of two decades of research work of the institute. Training Coordinator, Dr. Nanita Berry, HOD Extension outlined this first training program for Gujarat Forest Department. A series of lectures on nursery management, agroforestry models, NTFPs and tissue culture were delivered by the scientists. Laboratory and field visits were also organized during the training programme.



Two training programs on "Sustainable Harvesting and Conservation of Non-Timber Forest Products (NTFPs) (Kalimusli and Arjun)" were organized by Dr. Hariom Saxena, Scientist ICFRE- Tropical Forest Research Institute, Jabalpur on 5th December 2024 at the Van Dhan Center in Lakhanadoun, North Seoni Forest Division and Anjaniya Range, East Mandla Forest Division under the project funded by the Madhya Pradesh State Forest Department, Bhopal. 170 participants, including Divisional Forest Officers, Range Officers, frontline forest staff, and non-timber forest produce collectors, attended the training sessions. The programs aimed to educate and train participants on the sustainable harvesting and conservation practices of important NTFPs.



A three-day regional training on "Sustainable Land Management Practices to Mitigate Climate Change-Induced Land Degradation in Central India" was organized at ICFRE – TFRI Jabalpur. The training was attended by 25 representatives from state forest departments, various allied soil and water conservation agencies, the Farmers Welfare & Agriculture Department, Orient Paper Mill, and students from the states of Chhattisgarh, Maharashtra, and Madhya Pradesh.

Dr. H.S. Ginwal, Director of ICFRE-TFRI Jabalpur, highlighted various research activities conducted by the institute to address Land Degradation Neutrality (LDN) and climate change mitigation. The Chief Guest, Dr. Rajesh Sharma, Head of CoE-SLM (Centre of Excellence Sustainable Land Management), ICFRE, Dehradun, elaborated the role of CoE-SLM in ecologically restoring degraded lands across the country and fostering South-South collaboration for sharing research experiences.

Dr. Avinash Jain, scientist and training coordinator, informed recent trends and impacts of climate change and briefed about the training program. Dr. Krishna Giri, scientist at Dehradun, gave a brief presentation on CoE-SLM, including its establishment following the announcement by the Honourable Prime Minister of India, Shri Narendra Modi, during COP-14 in 2019.





October-December, 2024 VOL:16



The second one-week, training on "High-Quality Plant Production and Livelihood Security through Agroforestry" was organized at the Tropical Forest Research Institute (TFRI), Jabalpur, for 20 officers and staff from the Gujarat Forest Department. The training aims to enhance the productivity and quality of the country's forests. Dr. Nanita Barry, HOD Extension and Training Coordinator, provided a detailed overview of the program.





October-December, 2024 VOL:16

OUTREACH PROGRAMMES

On the occasion of Children's Day, 250 students from Krishna Kids School from KG-1 to 8th std., visited ICFRE-Tropical Forest Research Institute (TFRI), Jabalpur.

Dr. Nanita Barry, Head of the Forest Extension Division, addressed the students and explained about the research activities displayed in the institute museum.

During the visit, Mr. Alfred Francis, Senior Technical Officer; Mr. Manoj Joshi, Senior Technical Officer; Mr. Raghavendra Mehra, MTS and Mr. Shailendra Chandeli from the Forest Extension Division contributed to the program.



First Mahakaushal Science Fair

ICFRE-The Tropical Forest Research Institute (TFRI), Jabalpur, participated in the First Mahakaushal Science Fair held from 15th to 18th November 2024. The institute displayed developed innovative technologies aimed with increasing farmer's/producer's income, tissue culture-based production of advanced teak clones, hydroponics soilless cultivation of medicinal plant, TFRI Trichocards, soil health cards, biofertilizers, bamboo-based products, lac cultivation, and agroforestry models. Industrial partner M/s Mukund Biotech also joined the science fair with the institute.

Honorable,

M.P. Shri Ashish Dubey

visited the institute's stall, and appraised the work of TFRI scientists in different fields of forestry. Dr. Nanita Barry, Head of the Forest Extension Division, provided information about different research activities of the institute, while Dr. S.N. Mishra, Dr. Jangam Deepika, Scientists explained about the forest soil health cards developed by the institute.

The event saw active contributions from, Dr. P.K. Rana, Sh. Nahar Singh Mawai, Harshit, Raghavendra, Nandu, Pradeep and Shailendra Chandeli.

On the conclusion day of "First Mahakaushal Science Fair 2024" the Chief Minister, Dr. Mohan Singh Yadav as the chief guest joined the event at the veterinary university campus, in Jabalpur.

On this occasion, the institute was honoured by the chief guest for its outstanding contributions and excellence in the field of forest research.





October-December, 2024 VOL:16



PRAKRATI PROGRAM

Under the PRAKRATI program, students of 6th to 10th classes of PM Shri Kendriya Vidyalaya, GCF 1, Jabalpur visited the ICFRE - Tropical Forest Research Institute, Jabalpur in the study tour from 2nd to 6th December, 2024.



Important Day celebration

Wildlife week-2024

ICFRE-TFRI, Jabalpur celebrated Wildlife Week 2024 jointly with mining officials on 3rd October, 2024 at Gayatri Underground Mine, South Eastern Coal Limited (SECL), Bishrampur, Chhattisgarh. A tree plantation drive and awareness programme were organized.

Sh M. Rajkumar, Scientist-D delivered lecture on "Protecting Our Planet: Importance of Nature Conservation and Wildlife Conservation in Mining Areas". Dr. Jangam Deepika, Scientist-C delivered a talk on "Soil biodiversity-the hidden world beneath our feet". Sh. Ugra Nath Jha, Sub-Area Manager, RGK Sub-Area along with Sh. Gowtham Dut, Nodal officer (E&F), SECL Bishrampur Area; Sh. J.D. Singh, Mine Manager, Gayatri UG mine and other officials took part in the plantation program.

As part of the series of activities under Wildlife Week 2024, ICFRE-TFRI organized an awareness program at Eklavya Adarsh Avasiya Vidyalaya in Barbati village, Jabalpur (MP), on 4th October 2024. The program featured a film screening on wildlife conservation and highlighting the management of Bandhavgarh National Park, M.P. and Nauradehi Sanctuary M.P.

Dr. Nanita Berry, Head of the Forest Extension Division, encouraged students to participate in the "Prakriti" initiative for nature conservation. Approximately 300 students from classes 6 to 10, along with faculty members and TFRI officers, actively participated in the event.



October-December, 2024 VOL:16



A painting competition on the theme of "Wildlife Conservation" was held for the students of Kendriya Vidyalaya.

The event was successfully organized by an enthusiastic team of TFRI members (Dr. Nanita Berry, Head of the Forest Extension Division: Dr. S.N. Mishra: Shri Alfred Francis: Shri Manoj Joshi: Shri Raghavendra, and Shri Nikhil Patle).



On the 5th day of Wildlife Week 2024, ICFRE-Tropical Forest Research Institute (TFRI), Jabalpur, organized a one-day workshop on 'Wildlife Conservation' on 7th October 2024. Dr. Anirudha Majumdar, Scientist (Animal Ecology) from SFRI, delivered a presentation on 'Monitoring of Prey and Predators in Madhya Pradesh,' and Shri Rajkumar, Scientist-D, TFRI, spoke on 'Effective Strategies for Wildlife Conservation in Mining Areas'.

Dr. H.S. Ginwal, Director of the institute, appreciated the efforts of both speakers and emphasized the importance of conserving wildlife and protecting forests. Dr. Nanita Berry provided an overview of the activities conducted since October 2, 2024, and highlighted the closing event Wildlife Week on October 8, 2024, which included 'Bird Watching' of the TFRI campus.





October-December, 2024 VOL:16

STAFF NEWS

Name of Employee	Date of Joining	Date of reliving	Remarks
Ms. Mansi Mishra, Stenographer Grade II	04.1.2022	29.11.2024	Joined as Hindi Officer at LIC, Ahmedabad
G Phanindra Kumar Rao, IFS	30.12.2024	-	Posted as PCCF(HoFF), Kerala before joining ICFRE-TFRI.

AWARDS

In the 15th meeting of the Nagar Bhasha Karyanvayan Samiti, Office No. 2, Jabalpur, ICFRE-TFRI was awarded with the First Prize for its outstanding work in the promotion and implementation of the official language, Hindi. Dr. H.S. Ginwal, Director of the institute, received the award from the chief guest, Shri Manoj Kumar Gupta, Chief Rajbhasha Officer, West Central Railway, Jabalpur. The event, organized by the NRKA Secretariat and the Office of the General Manager, West Central Railway, Jabalpur, saw participation from 46 member offices.



PUBLICATION

Popular Article

सौरभ दुबे (2023). छत्तीसगढ़ के वनों ली लघु वनोपज प्रदान करने वाली कुछ महत्त्वपूर्ण वृक्ष प्रजातियाँ. वन दर्पण, 23:22-23. (published in September,2024)



नव स्वदेश बुधवार, 12 दिसंबर, 2024 3

जलवायु परिवर्तन पर तीन दिवसीय प्रशिक्षण का हुआ शुभारंभ



जलवायु परिवर्तन पर तीन दिवसीय प्रशिक्षण का शुभारंभ हुआ। इस अवसर पर, जलवायु परिवर्तन के चुनौतियों और समाधानों पर चर्चा हुई। प्रशिक्षण में 25 प्रतिनिधियों का सहभाग था।

पीपुल्स समाचार

गुजरात से आए वन अफसरों ने जाना कैसे करें उच्च गुणवत्ता वाले पौधों का उत्पादन

टीएफआरआई में वैज्ञानिकों ने फॉरेस्ट हेल्थ केंद्र के साथ बताया कैसे भी कौटी का प्रबंध



गुजरात के वन अफसरों ने टीएफआरआई में एक प्रशिक्षण कार्यक्रम में भाग लिया। इस दौरान, वैज्ञानिकों ने उच्च गुणवत्ता वाले पौधों के उत्पादन के तरीके बताने का प्रयास किया।

TheHitavada
Jabalpur City Line | 2024-12-04 | Page-4
ehitavada.com

Deputy Conservators, Rangers of ICFRE take part in training programme



Senior officers releasing souvenir of the programme.

■ Staff Reporter

WEEKLONG training on 'High Quality Plant Production and Livelihood Security through Agroforestry' was inaugurated for 20 Gujarat Forest Department officers including Deputy Forest Conservators and Rangers at ICFRE - Tropical Forest Research Institute, Jabalpur.

TFRI, Director Dr. H.S. Gwalwal expressed his keenness to share the research work and achievements of the Institute in two decades through this training. Training Coordinator Dr. Nanita Bai, Scientist outlined this first training program for Gujarat Forest Department to be held from 2-6 December. The training will focus on learning about raising quality plants of important wood and non-wood tree species including bamboo and successful agroforestry models through expert talks, hands-on demonstrations and farmers field visits.

नव स्वदेश बुधवार, 4 दिसंबर 2024 3

वन अधिकारियों के लिए आजीविका सुरक्षा पर प्रशिक्षण का उद्घाटन



जलवायु परिवर्तन और वन संरक्षण के संदर्भ में, वन अधिकारियों को प्रशिक्षण का उद्घाटन किया गया। निदेशक डॉ. एस.एस. गिन्गवाल ने इस प्रशिक्षण के माध्यम से वन संरक्षण में दो दशकों के शोध कार्य की उपलब्धियों को सझा करने की बात कही। प्रशिक्षण समन्वयक डॉ. ननिता बैरी, वैज्ञानिक ने 2-6 दिसंबर तक आयोजित होने वाले गुजरात वन विभाग के लिए इस प्रथम प्रशिक्षण कार्यक्रम की रूपरेखा बताई। प्रशिक्षण में विशेषज्ञ वार्ता, व्यावहारिक प्रदर्शन और निगरानी के खेतों के दौर के माध्यम से सफल कृषि खानि की मॉडल सहित, खास और महत्वपूर्ण कड़ा एवं अकष्ट कृष प्रजातियों के पौधों को बचाने हेतु प्रशिक्षण किया जाएगा।

● ● ● ● ●

— स्वदेश —
www.swadesh.in

आजीविका सुरक्षा पर एक साप्ताहिक प्रशिक्षण का उद्घाटन



जलवायु परिवर्तन और वन संरक्षण के संदर्भ में, वन अधिकारियों को प्रशिक्षण का उद्घाटन किया गया। निदेशक डॉ. एस.एस. गिन्गवाल ने इस प्रशिक्षण के माध्यम से वन संरक्षण में दो दशकों के शोध कार्य की उपलब्धियों को सझा करने की बात कही। प्रशिक्षण समन्वयक डॉ. ननिता बैरी, वैज्ञानिक ने 2-6 दिसंबर तक आयोजित होने वाले गुजरात वन विभाग के लिए इस प्रथम प्रशिक्षण कार्यक्रम की रूपरेखा बताई। प्रशिक्षण में विशेषज्ञ वार्ता, व्यावहारिक प्रदर्शन और निगरानी के खेतों के दौर के माध्यम से सफल कृषि खानि की मॉडल सहित, खास और महत्वपूर्ण कड़ा एवं अकष्ट कृष प्रजातियों के पौधों को बचाने हेतु प्रशिक्षण किया जाएगा।

● ● ● ● ●

TheHitavada
Jabalpur City Line | 2024-12-12 | Page-4
ehitavada.com

3-day training on climate induced land degradation begins at ICFRE-TFRI

■ Staff Reporter

FOCUSING on the theme Climate Induced Land Degradation, a three-day Regional Training on 'Sustainable Land management Practices to Mitigate Climate Change Induced Land Degradation in Central India', was inaugurated at ICFRE - Tropical Forest Research Institute Jabalpur, on Wednesday.

The training is being attended by 25 representatives from State Forest Departments, different allied Soil & Water Conservation agencies, Farmers Welfare & Agriculture Department, Orient Paper Mill and students from state of Chhattisgarh, Maharashtra and Madhya Pradesh.

Dr H.S. Gwalwal, Director ICFRE - TFRI, Jabalpur briefed about various research activities conducted by the institute in order to address Land Degradation Neutrality and climate change mitigation.



Guests inaugurating the regional training programme at TFRI.

Chief Guest Dr. Rajesh Sharma, Head, CoE-SLM, ICFRE, Dehradun explained about role of CoE-SLM in ecologically restoring the degraded lands in the country and south collaboration for sharing research experiences.

Dr Avinash Jain, Scientist & Training Coordinator informed about recent trends and impacts of climate change and briefed about the training program. Dr. Krishna Giri, Scientist, CoE-SLM, Dehradun presented a brief about CoE-SLM and informed about its establishment upon its announcement by Prime Minister, Narendra Modi during COP 14 during 2019.

Powered by iDocuments

CITY BOOK 04 पत्रिका
सिटी बुक 04 जलपुर, बुधवार, 04 दिसंबर 2024

वन संरक्षकों को दिया प्रशिक्षण



जलपुर में वन संरक्षण के संदर्भ में, वन अधिकारियों को प्रशिक्षण का उद्घाटन किया गया। निदेशक डॉ. एस.एस. गिन्गवाल ने इस प्रशिक्षण के माध्यम से वन संरक्षण में दो दशकों के शोध कार्य की उपलब्धियों को सझा करने की बात कही। प्रशिक्षण समन्वयक डॉ. ननिता बैरी, वैज्ञानिक ने 2-6 दिसंबर तक आयोजित होने वाले गुजरात वन विभाग के लिए इस प्रथम प्रशिक्षण कार्यक्रम की रूपरेखा बताई। प्रशिक्षण में विशेषज्ञ वार्ता, व्यावहारिक प्रदर्शन और निगरानी के खेतों के दौर के माध्यम से सफल कृषि खानि की मॉडल सहित, खास और महत्वपूर्ण कड़ा एवं अकष्ट कृष प्रजातियों के पौधों को बचाने हेतु प्रशिक्षण किया जाएगा।

● ● ● ● ●



October-December, 2024 VOL:16

Knowledge Bequest of ICFRE-TFRI, Jabalpur

National Insect Repository

- 750 species of insects.
- Recognized by National Biodiversity Authority (NBA) as National Repository



Mycology Herbarium

- 4000 Fungal specimens systematically arranged and documented and 451 species of Fungi identified.
- Forest fungi identification service available



Herbarium

- 800 plant specimens preserved in Herbarium .
- Forest Ecology & Climate Change Division provides services of plant identification on submission of specimens.



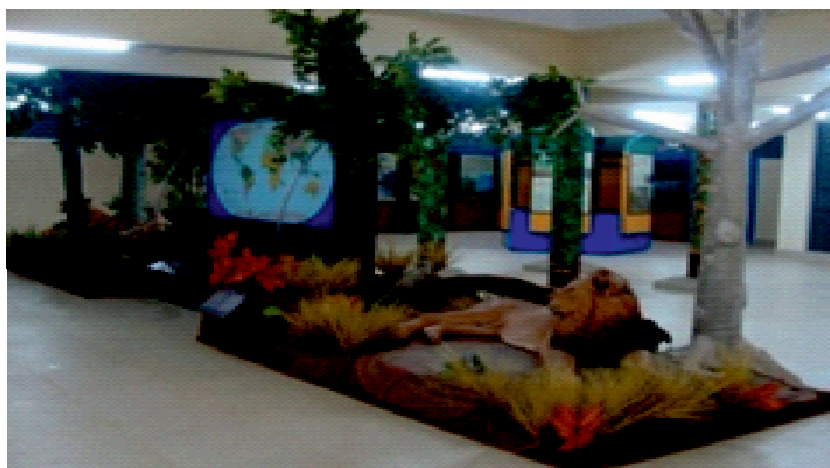
and transcription factors (MYBland MYB2) exhibits association





October-December, 2024 VOL:16

Museum cum Interpretation Centre



Educational services for youth, entrepreneur & professionals

Institute conduct Internship programmes for student s/stakeholders

Internship Charges

Sl.No.	Training Period	Biotechnology /Molecular Biology		Other Disciplines	
		B.Sc./Undergraduate	M.Sc. Postgraduate	B.Sc./Undergraduate	M.Sc. Postgraduate
1.	One Week	Rs. 1,000=00	Rs. 2,000=00	Rs. 1,000=00	Rs. 2,000=00
2.	Fifteen days	Rs. 2,000=00	Rs. 4,000=00	Rs. 1,500=00	Rs. 3,000=00
3.	One Month	Rs. 3,000=00	Rs. 8,000=00	Rs. 3,000=00	Rs. 5,000=00
4.	Two Months	Rs. 5,000=00	Rs. 11,000=00	Rs. 5,000=00	Rs. 7,000=00
5.	Three Months	Rs. 28,000=00	Rs. 16,000=00	Rs. 7,000=00	Rs. 11,000=00
6.	Above three months to six months	Rs. 12,000=00	Rs. 22,000=00	Rs. 9,000=00	Rs. 16,000=00



October-December, 2024 VOL:16

Testing facilities available at ICFRE – TFRI, Jabalpur

S1. No	Parameter	Price in
1.	pH	100/- per sample
2.	EC	100/-per sample
3.	Organic Carbon (OC) /Organic Matter	100/-per sample
4.	Major nutrients (N, P, K, Ca, Mg, Na)	300/- each and 1500/- package
5.	Micronutrient (Mg, Ni, Zn, Fe, Co, Cr, Cu, Mn, B)	300/- each and 2000/- package
6.	Texture analysis	500/-per sample
7.	Bulk Density	150/-per sample
8.	Total soil Analysis (1 to 7)	4000/-per sample
9.	Dry matter / Moisture percentage	100/-per sample
10.	Plant testing – N, P, K, Ca, Mg, Na	250/- element and 1300 / -for all
11.	Plant identification charges	250/- specimen
12.	Bio- control agent -egg parasitoid card (25000 eggs /card)	300/- card
13.	Laboratory testing of pesticide (biopesticide / insecticide) against	20,000/- per defoliator
14.	insect defoliator/ white grub	40,000/- per white grub
15.	Field testing of insecticides against termites and insect defoliators	1,00,000/-
16.	Identification services for decay fungi/mould	1000/ species
17.	Identification of fungal specimen and its matching with herbarium	250/-per sample
18.	Micro photography of fungi	100/-per sample
19.	Seed germination and viability test	500/- per sample
20.	Seed purity tests	400/- per sample
21.	Moisture content of seeds	200/- per sample
22.	Determination of phenols (if standards available)	600/- per sample
23.	Determination of tannins (if standards available)	600/- per sample
24.	Determination of carbohydrates (if standards available)	600/- per sample
25.	Determination of starch (if standards available)	600/- per sample
26.	Determination of chlorogenic acid (if standards available)	600/- per sample
27.	Determination of Protein (if standards available)	600/- per sample
28.	Chemo profiling of medicinal plants with the help of HPTLC	2000/- for the first sample & 500/- per subsequent sample of the same sp.
29.	Leaf area Measurement	200/- per sample
30.	Estimation of a single marker constituent in plant extract	5500/- per sample for Academia / R &D, 10000/- per sample for Industry
31.	Ash Content	610/-per sample for Academia , 1100 / per sample for Industry
32.	Microscopic analysis	500/- per sample
33.	Genetic Fidelity testing	10,000/- per sample (Minimum 10samples)



October-December, 2024 VOL:16

Services for to make your society green and healthy

Improved Varieties -Cost per plant- Rs. 100/- plant

S. No.	Species	Number of Plants Available
1.	<i>Rauvolfia serpentina</i> TFRI RS-1 (Sarpagandha)	200
2.	<i>Rauvolfia serpentina</i> TFRI RS-2 (Sarpagandha)	150

Bamboos Species- Rs. 30/-plant

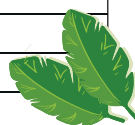
S. No.	Species	Number of Plants Available
1.	<i>Bambusa bambos</i> (Katang bans)	1350
2.	<i>Bambusa vulgaris</i> (var. green)	110
3.	<i>Bambusa nutans</i>	75
4.	<i>Dendrocalamus strictus</i> (Lathi bans)	940
5.	<i>Dendrocalamus longispatus</i>	100

Tree Species and Medicinal Plants - Rs. 25/- plant

S. No.	Species	Number of Plants Available
1.	<i>Tectona grandis</i> (Teak, Sagoan)	200
2.	<i>Dalbergia latifolia</i> (Kala shisham, Rosewood)	200
3.	<i>Celastrus paniculatus</i> (Malkagini, Jyotishmati)	100
4.	<i>Plumbago zeylanica</i> (Chitrak)	100
5.	<i>Oroxylum indicum</i> (Shivnag)	50
6.	<i>Tamarindus indica</i> (Imli)	150

Seeds and plants available for sale

Sl. No	Name of species		Rates	
	Common name	Scientific name	Seeds (Rs/kg)	Plants (Rs./Plant)
1.	Sagon	<i>Tectona grandis</i>	5000/-	30/- (Seed raised) 60/- (Tissue culture raised)
2.	Beejasa1	<i>Pterocarpus marsupium</i>	5000/-	31/-
3.	Shisham	<i>Dalbergia latifolia</i>	7000/-	50/-
4.	Sisso	<i>Dalbergia sisoo</i>	3000/-	100/-
5.	Maida chhal	<i>Litsea glutinosa</i>	10000/-	50/-
6.	Chironji	<i>Buchanania lanzan</i>	8000/-	50/-
7.	Kullu	<i>Sterculia urens</i>	---	---
8.	Mahua	<i>Madhuca longifolia</i>	5000/-	---
9.	Neem	<i>Azadirachta indica</i>	5000/-	50/-
10.	Imli	<i>Tamarindus indica</i>	3000/-	30/-
11.	Bel	<i>Aegle marmelos</i>	---	30/-
12.	Karanj	<i>Pongamia pinnata</i>	3000/-	30/-
13.	Khamer	<i>Gmelina arborea</i>	1000/-	50/-
14.	Haldu	<i>Adina cordifolia</i>	---	50/-
15.	Bamboo	Different Species	---	50/-
16.	Sarpagandha	Released Variety TFRI-RS-I, TFRI-RS-II	---	50/-
17.	Kaim/Mundi	<i>Mitragyna parvifolia</i>	3000/-	50/-
18.	Kumbi	<i>Careya arborea</i>	3000/-	50/-
19.	Jamun	<i>Syzygium cumini</i>	3000/-	50/-
20.	Khair	<i>Acacia catechu</i>	5000/-	---
21.	Babul	<i>Acacia nilotica</i>	3000/-	---





October-December, 2024 VOL:16

Plants Available for Sale at Silviculture, Forest Management Division, TFRI, Jabalpur

S. No.	Species	Number of Plants Available
1.	<i>Tinospora cordifolia</i> (Giloy)	100
2.	<i>Aegle marmelos</i> (Bel)	540
3.	<i>Cymbopogon citratus</i> (Lemon grass)	100
4.	<i>Oroxylum indium</i> (Shyonak)	50
5.	<i>Mimusops elengi</i> (Moulshri)	260
6.	<i>Asparagus racemosus</i> (Satawar)	100
7.	<i>Artemisia annua</i> (Davana)	30
8.	<i>Phyllanthus emblica</i>	25
9.	<i>Terminalia arjuna</i>	30
10.	<i>Moringa oleifera</i> L	1850
11.	Bamboo	600
12.	<i>Delonix regia</i>	3000
13.	<i>Cassia fistula</i>	1000
14.	<i>Pongamia pinnata</i>	550
15.	<i>Tamarindus indica</i>	820
16.	<i>Albizia lebbek</i>	5000
17.	<i>Syzygium cumini</i>	540
18.	<i>Terminalia bellirica</i>	720
19.	Other Species	As per availability

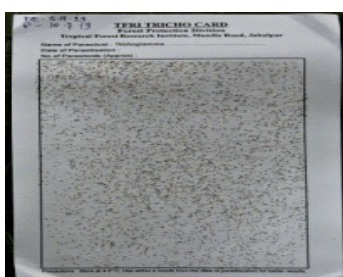


Medicinal/trees species Plants- Rs. 30/- plant

- Prices and number may be varied as per the availability and season

TFRI TRICHO-Card

- TFRI-TRICHOCARD developed using the parasitoid, *Trichogramma raii*.
- It's an Ecofriendly bio-control method for managing teak defoliator & skeletonizer.
- 4 cards required for a hectare area **cards available @ Rs. 500/- per card**

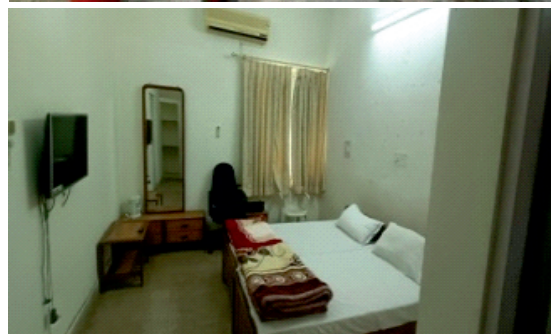
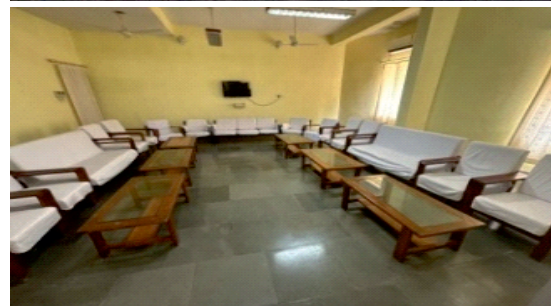




October-December, 2024 VOL:16

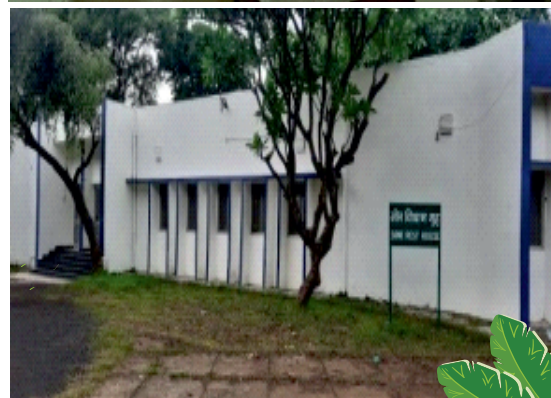
Guest House facilities and Charges

S.No.	Category of Person	Rent per day while on Govt. Duty (Rs.)		Rent per day while not on Govt. Duty (Rs.)	
		Rooms	Suits	Room	Suit
1.	a) Officials of ICFRE and institutes b) Consultants and research Fellow at ICFRE and its institutes and FRI Deemed Universities c) Officials and experts of MoEF&CC, New Delhi d) Officials of SFDs e) Ex- employees of ICFRE and Ex-Deputationist	150	200	200	300
2.	Family members of present /ex -employees a) ICFRE Employees b) ICFRE Deputationist			200	500
3.	a) Officials of Autonomous bodies, Universities under the FRI Deemed University b) Officials of Central/State Government other than SFDs	200	300	400	300
4.	Others (Non Governmental)			600	750



Maintenance charges in addition to above rent will be applicable as follows:

Accommodation type	Maintenance charge including A/C, Heater Charges
Room	Rs. 200/-per day
Suit	Rs. 250/- per day





ICFRE - TFRI NEWSLETTER



October-December, 2024 VOL:16

Patron

Dr. H. S. Ginwal

Director

ICFRE-TFRI, Jabalpur

Editor-in-Chief

Smt. Neelu Singh

Scientist –G, Group Co-Ordinator (Research)

ICFRE TFRI, Jabalpur

Editors

Dr. Jangam Deepika

Scientist –C, FE&CC Division, ICFRE-TFRI, Jabalpur

Shri Rathod Digvijaysinh Umedsinh

Scientist –C, SFM &AF Division, ICFRE-TFRI, Jabalpur

Dr. Kaushal Tripathi

Scientist –C, GTI Division, ICFRE-TFRI, Jabalpur

Shri Ajit Kumar Maurya

Scientist –B, SFM & AF Division, ICFRE-TFRI, Jabalpur

Technical support

Shri H. L. Asati

Senior Technical Officer, ICFRE -TFRI, Jabalpur

Smt. Nikita Rai

Sr. Technician, ICFRE -TFRI, Jabalpur

Shri Ravi Kant Sahu

LDC, ICFRE-TFRI, Jabalpur

For further information contact

GROUP COORDINATOR RESEARCH

ICFRE - TROPICAL FOREST RESEARCH INSTITUTE

(Indian Council of Forestry Research & Education)

P.O.:R.F.R.C., Mandla Road, Jabalpur - 482021, Madhya Pradesh

Phone No: - + 91-761-2840010(O) Fax :- + 91-761-2840484

Group Coordinator (Research) Phone :0761 -2840003

Website :- <http://tfri.icfre.gov.in>; Email: - dir_tfri@icfre.org, groupco_tfri@icfre.org





October-December, 2024 VOL:16

ABOUT THE INSTITUTE

- ICFRE-Tropical Forest Research Institute, Jabalpur (Madhya Pradesh) came into existence in April 1988, to provide strong research support to sustainable development of forest and forestry sectors in central India comprising the states of Madhya Pradesh, Chhattisgarh and Maharashtra.
- It is one of the nine Regional institutes under the Indian Council of Forestry Research & Education, Dehradun (Uttarakhand).
- ICFRE-Skill Development Center, Chhindwara, came into existence on 30th March 1995. It was declared on 3rd January 1996, a satellite Centre of ICFRE-Tropical Forest Research Institute, Jabalpur.



Core Research Areas

- ❖ Eco-restoration of Vindhyan, Satpura and Maikal hills and Western Ghats, Rehabilitation of mined areas.
- ❖ Development and Demonstration of Agroforestry Models
- ❖ Forest Protection
- ❖ Biofertilizers and Biopesticides
- ❖ Non-Wood Forest Products
- ❖ Biodiversity Assessment, Conservation and Development
- ❖ Sustainable Forest Management
- ❖ Planting Stock Improvement
- ❖ Climate Change & Environment Amelioration
- ❖ Forest Products Development
 - ❖ Silviculture and Forest Nursery Management

